

PRODIGY®

Diabetes Management Software v2.5

Installation Guide



PRODIGY
AutoCode®

PRODIGY
Pocket®

PRODIGY
VOICE®

Blood Glucose Monitoring Systems

Important Safety Information

Read this Installation Guide thoroughly before using this software.

WARNINGS:

- Please consult with your healthcare professional before using any diabetes management software.
- The Prodigy Diabetes Management Software is only for reference and recording of diabetes management data. You should consult with your physician prior to making any adjustments in your diabetes medication, treatment or blood glucose targets.

The following basic safety precautions should always be taken:

- Do not use this software if it is not working properly.

System Requirements

Please do not download the software if your computer does not meet the minimum hardware requirements below.

PROCESSOR

Minimum 500 MHz

Recommended 1 GHz or higher

RAM

Minimum 192 MB

Recommended 512 MB or higher

HARD DISK SPACE

600 MB free space

OPERATING SYSTEMS

Windows 11

Windows 10

Windows 8

Windows 7

Windows Vista

Windows XP

USB Port

NOTE: Users will need Administrator privileges to download the software.

Prodigy Diabetes Management Software

Installation

- 1 Click on the software download link and select "Run" to install the Prodigy Diabetes Management Software.

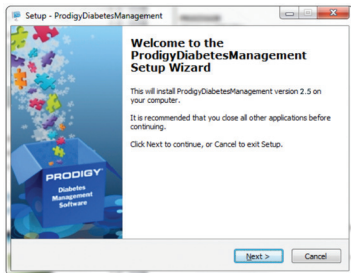


Minimum Hardware Requirements

Please do not download the software if your computer does not meet the minimum hardware requirements listed below:

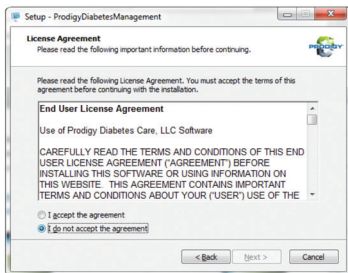
Processor - Minimum 500 MHz, Recommended 1 GHz or higher
RAM - Minimum 192MB, Recommended 512MB or higher
Hard Disk Space - 600MB free space
Operating System - Windows 11, Windows 10, Windows 8, Windows 7, Windows Vista, Windows XP
USB Port

- 2 The Setup Wizard window will appear. Click **Next >**.

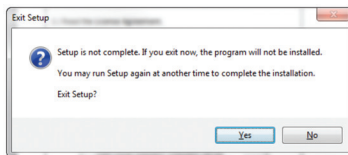


3 Thoroughly read and understand the License Agreement.

If you do **not** agree to the terms, check the radio button next to "I do not accept the agreement" and click **Cancel**.



You will get the following screen:



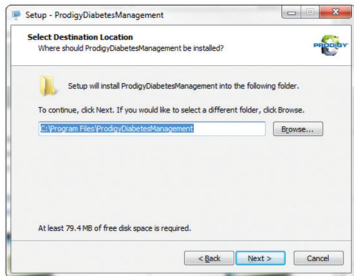
If you still want to stop the download process, click **Yes**.

If you click **No**, you will be taken back to the License Agreement screen.

If you agree to the terms, check the radio button next to "I accept the agreement" and click **Next >** to proceed.

4 Select where you would like the software installed.

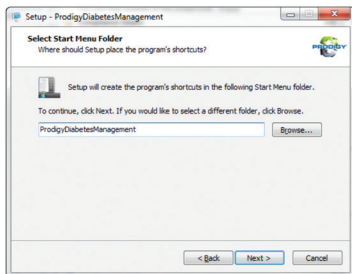
Setup Wizard is defaulted to C Drive, Program Files. If you would like to install the program in another location, click **Browse ...** and select a new folder.



Once you've determined the location where you want the program installed, click **Next >**.

5 Select the location for the program's shortcut.

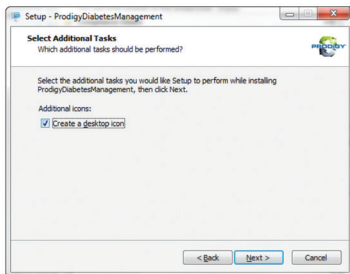
Setup Wizard is defaulted to the Start Folder. If you would like to place the shortcut in another location, click **Browse...** and select a new location.



Once you've determined the location of the shortcut, click **Next >**.

- ⑥ Additional Setup Wizard tasks include creating a desktop icon for easy access.

If you would like for Setup Wizard to create a desktop icon, click the box next to "Create a desktop icon". It will be marked with a check.



If you do not wish to create a desktop icon, leave the box unchecked.

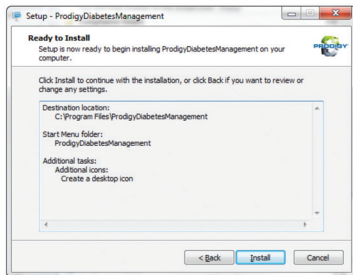
Click **Next >**.

7 You are ready for installation of the program.

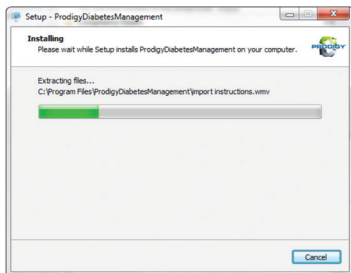
Click **< Back** to review and/or change settings.

Click **Install** to continue the installation.

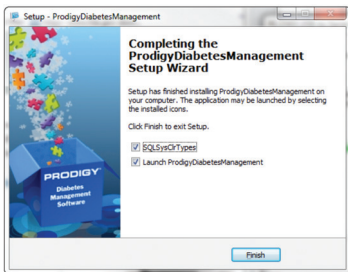
Click **Cancel** to stop and exit the installation.



- 8 After you click **Install**, a progress bar will appear and the program will start loading.



- 9 Once the program has been successfully installed, you will receive the following screen:



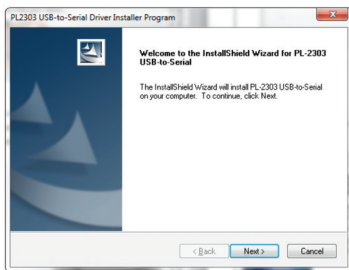
Click **Finish** and Setup Wizard will automatically close out.

Serial Driver Software

The Serial Driver is used to transmit the serial number from your Prodigy meter to Prodigy's Diabetes Management Software.

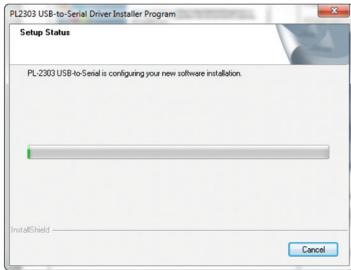
Installation

After the Setup Wizard has completed installation of the software, and if you do not already have the PL2303 Serial Driver installed on your computer, the InstallShield Wizard will open up in a new screen.



- 1 Click **Next >**.

- 2 A progress bar will appear and the program will start loading.



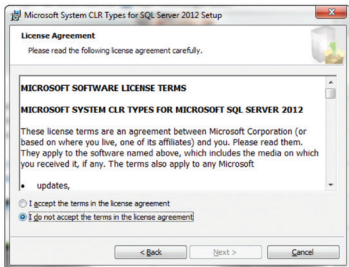
When loading is complete, you will be taken to the Welcome screen.



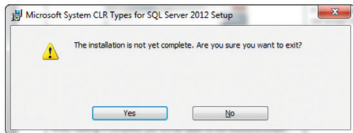
Click **Next >**.

3 Thoroughly read and understand the License Agreement.

If you do **not** agree to the terms, check the radio button next to "I do not accept the terms in the license agreement" and click **Cancel**.



You will get the following screen:



If you still want to stop the download process, click **Yes**.

If you click **No**, you will be taken back to the License Agreement screen.

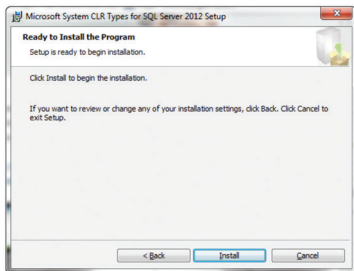
If you agree to the terms, check the radio button next to "I accept the terms in the license agreement" and click **Next >** to proceed.

4 You are ready for installation of the program.

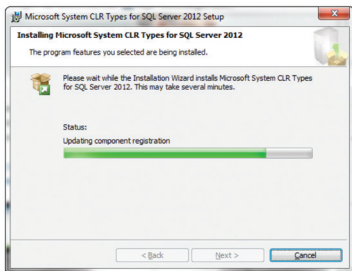
Click **< Back** to review and/or change settings.

Click **Install** to continue the installation.

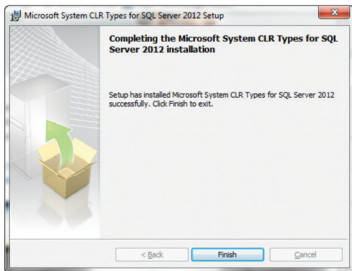
Click **Cancel** to stop and exit the installation.



- 5 A progress bar will appear and the program will start loading.



Once the program has been successfully installed, you will receive the following screen:



Click **Finish** and InstallShield Wizard will automatically close out.

Uninstall

To uninstall the software on Windows XP operating system:

- 1 Click on **Start**.
- 2 Choose the **Control Panel**.
- 3 Click on **Add or Remove Programs**.
- 4 Click the **Remove** button for "Prodigy Diabetes Management Software V2.5"

To uninstall the software on Windows 11, Windows 10, Windows 8, Windows 7 and Windows Vista:

- 1 Click on **Start**.
- 2 Choose the **Control Panel**.
- 3 Click on **Programs and Features**.
- 4 Click on "**Prodigy Diabetes Management Software V2.5**".
- 5 Click **Uninstall** from the menu option.

PRODIGY[®]

Prodigy Diabetes Care, LLC

PO Box 481928

Charlotte, NC 28269

1.800.366.5901

Customer Care:

1.800.243.2636

Monday - Friday 8:30AM to 5:30PM (EST)

www.prodigymeter.com

©2017 Prodigy Diabetes Care LLC. PRODIGY[®], AutoCode[®], and PRODIGY AutoCode[®] are registered trademarks of Prodigy Diabetes Care, LLC. All other trademarks are property of their respective owners. All rights reserved.